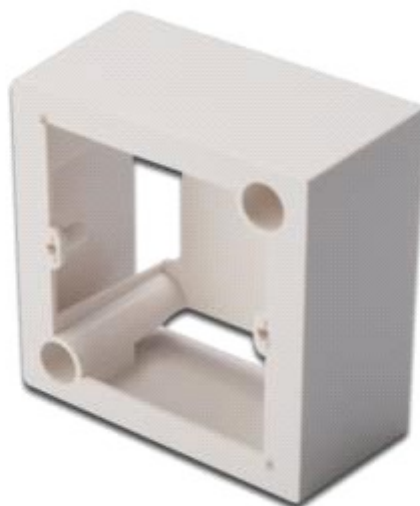


IDEAL Professional Surface Mountbox for Walloutlet Faceplates 80x80 mm

RTC80



IDEAL Surface mount box for faceplates 80x80 mm, color pure white

The IDEAL® Surface mount boxes for keystone outlets are the perfect solution to extend your data outlets. Available layouts: German, French, British, Spanish.



- 1 Layout keystone entry: 90° outlet
- 1 Area of application: Cavity socket, trunking, surface mount box
- 1 Norms: ISO/IEC 11801 2nd Ed., EN 50173-1, EIA/TIA 568-C
- 1 General properties:
 - 1 Suitable for installation in trunking, flush and surface mount
 - 1 Integrated dust cover
 - 1 Plastic label field
 - 1 Design compatible to current switch ranges of switch manufacturers
- 1 Technical properties:
 - 1 Wall outlet material: Die-cast metal
 - 1 Central plate material: ABS UL 94V-0
 - 1 Frame material: ABS UL 94V-0
 - 1 Surface mount box material: ABS UL 94V-0
- 1 Physical properties:
 - 1 Operation temperature: -20° C to +70 °C (ISO/IEC 11801, EN 50173-1, ANSI/TIA/EIA 568 C)