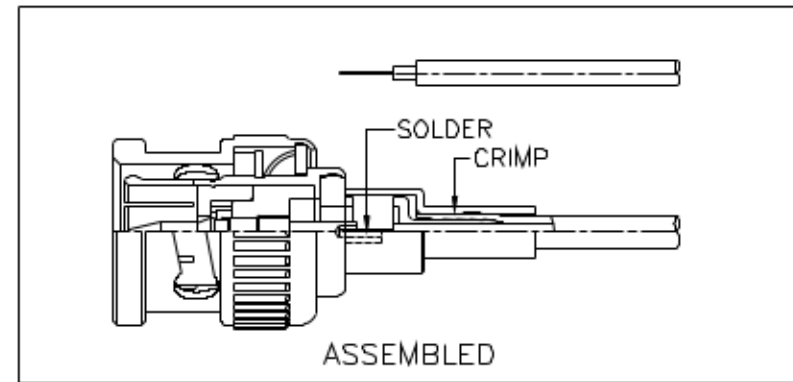
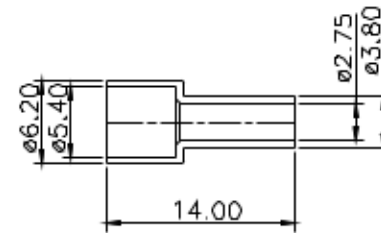
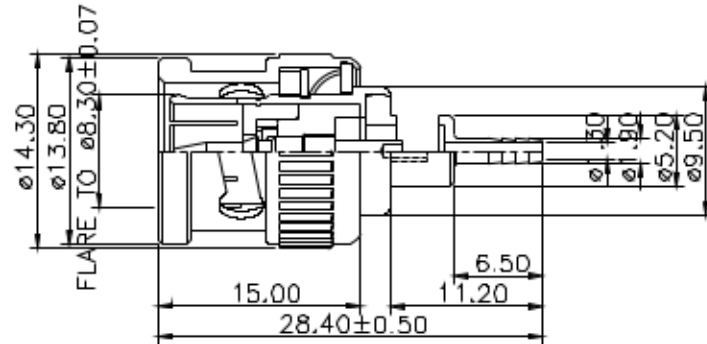


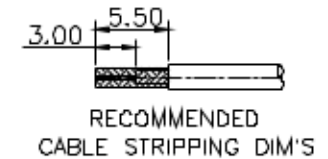
REVISIONS

RevNo	Description	Date	Revision	Mender
1	CHANGE 2.40 TO 2.20	2009/01/08	A2	CKQ
2	Change design	2009/01/17	A3	Xwj
3	HEX CRIMP SIZE .10 Change to .128	2009/02/04	A4	Xwj





ROHS Compliant

- 1.CRIMPED REAR BODY HEX CRIMP SIZE .128"
- 2.CONTACT PIN TO SOLDER



11	FERRULE	BRASS	1	NICKEL PLATED
10	REAR BODY	BRASS	1	NICKEL PLATED
9	CONTACT PIN	BRASS	1	GOLD PLATED
8	WASHER	IRON	1	NICKEL PLATED
7	SPRING	SK5	1	NICKEL PLATED
6	RETAINER RING	65Mn	1	NICKEL PLATED
5	GASKET	RUBBER	1	RED
4	INSULATOR	POM	1	NATURAL
3	INSULATOR	POM	1	NATURAL
2	BODY	ZINC	1	NICKEL PLATED
1	SHELL	ZINC	1	NICKEL PLATED
ITEM	DESCRIPTION	MATERIAL	Q'TY	FINISHED

				TITLE			
				BNC PLUG CRIMP(SOLDER PIN)			
DRAWING NO		UNITS	MM	UNLESS OTHERWISE SPECIFIED TOLERANCES		DESIGNED	Xwj
MODEL NO.		SCALE	FIT	0.5-15 = ±0.15	ANGLES ±5°	DRAWING	Xwj
PART NO.		EDITION	A1	15-30 = ±0.30		CHECKED	David
CAD FILE				30-120 = ±0.60		APPROVED	Andy
				>120 = ±1.00		2008/12/27	
						 3RD ANGLE	